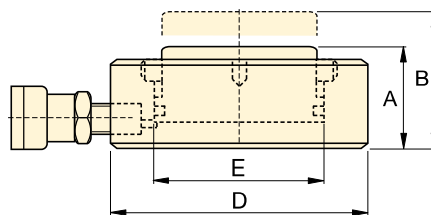



# Ultra-Flat Cylinders with Stop Ring

▼ CULP50 Ultra-Flat Cylinder, with Stop Ring



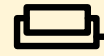
- Up to 4% side load of maximum capacity
- Stop ring for maximum stroke limitation
- Extremely low collapsed height
- Nitrocarburized surface treatment for harsh conditions.



Cylinder Capacity @ 700 bar	Stroke	Model Number	Cylinder Effective Area	Oil Capacity	Collapsed Height A	Extended Height B	Outside Diam. D	Cylinder Bore Diam. E	
ton (kN)	(mm)		(cm <sup>2</sup> )	(cm <sup>3</sup> )	(mm)	(mm)	(mm)	(mm)	(kg)
10 (97)	6	CULP10 <sup>1)</sup>	13,9	8,3	27,5	33,5	72	42	1,0
20 (198)	6	CULP20 <sup>1)</sup>	28,3	17,0	32,0	38,0	90	60	1,7
30 (310)	6	CULP30 <sup>1)</sup>	44,2	26,5	35,0	41,0	105	75	2,5
50 (550)	6	CULP50 <sup>1)</sup>	78,5	47,1	44,5	50,5	140	100	5,4
100 (1078)	6	CULP100 <sup>2)</sup>	153,9	92,5	65,0	71,0	195	140	11,5

<sup>1)</sup> Coupler AR630 including dustcap: use HB7206 hose including AH630 coupler to connect to your pump.  
<sup>2)</sup> Coupler CR400 including dustcap: use HC-Series hose including CH604 coupler to connect to your pump.

## CULP Series



Capacity:  
**10 - 100 ton**

Stroke:  
**6 mm**

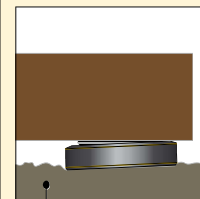
Maximum Operating Pressure:  
**700 bar**



### IMPORTANT!

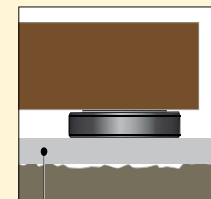
All Ultra-Flat Cylinders require a solid lifting surface for correct support. The use of these flat cylinders on surfaces such as sand, mud or dirt, may result in cylinder damage.

 **INCORRECT!**



Rough soil

 **CORRECT!**



Flat lifting surface

For more safety instructions see our 'Yellow Pages'.



### Hoses

Enerpac offers a complete line of high quality hydraulic hoses. To ensure the integrity of your system, specify only Enerpac hydraulic hoses.

▼ The Ultra-Flat cylinders are designed for applications where high lifting forces are required in confined spaces starting at 2,8 cm.

